

DESCRIPTION

ACAWE BASED 16 OZ HOT & COLD CUP

H 4.7" x D 3.85"

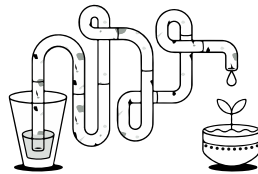
500 ct

BULK



MATERIALS

Agave Fibers, Plant Fibers,
Biopolymer, Organic Compound
Additives



MFG

16NA500

GTIN

7503028634781

PRESENTATION

Bulk

PACK SIZE

10/50
500 count

COLOR

Natural



Master Carton	21.25" x 8.6" x 15.35"	17.10 lbs
Pallet Configuration	Ti Hi 9 x 4	36 cases
Pallet Specs	40" x 48" x 93"	648.00 lbs

TESTED AND APPROVED

By EMA accredited labs in conformity to ASTM 6400, ASTM 5511 & OECD 301.

RESISTANT PRODUCT

In both cold and hot beverages, ranging from 0° to 80° celcius.

LONG SHELF LIFE TIME

Shelf life time greater than 300 days, decomposition triggered upon use.

NO MICRO-PLASTICS

Degradation does not produce nor leave, microplastics.

PREMIUM PRODUCTS

With high rigidity and durability, 100% recyclable and reusable.