

DESCRIPTION

# NATURAL AGAVE COCKTAIL STRAW

5.9" x 6.0mm

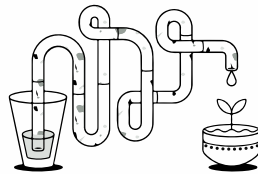
2,000 ct

UNWRAPPED



MATERIALS

Agave Fibers, Plant Fibers, Biopolymer, Organic Compound Additives



MFG

SNA15U

GTIN

7503028634156

PRESENTATION

Unwrapped, Bulk

PACK SIZE

4/500  
2,000 count

COLOR

Natural



Master Carton	12.4" x 10.6" x 7.9"	3.53 lbs
Pallet Configuration	Ti Hi 12 x 10	120 cases
Pallet Specs	40" x 48" x 84"	456.29 lbs

## TESTED AND APPROVED

By EMA accredited labs in conformity to ASTM 6400, ASTM 5511 & OECD 301.

## RESISTANT PRODUCT

In both cold and hot beverages, ranging from 0° to 80° celcius.

## LONG SHELF LIFE TIME

Shelf life time greater than 300 days, decomposition triggered upon use.

## NO MICRO-PLASTICS

Degradation does not produce nor leave, microplastics.

## PREMIUM PRODUCTS

With high rigidity and durability, 100% recyclable and reusable.